





**Cultivate with Gavriel,
Cultivate your Future!**

Contents



Page 02
Introduction



Page 05
Contact data



Page 06
Granular fertilizers



Page 08
Water soluble fertilizers



Page 10
Nutrimore



Page 11
Nutrimore N



Page 12
Nutrimore NP



Page 13
Nutrimore NPK



Page 14
Nutrimax P+ +TE



Page 16
Ceres



Page 18
Idealfer



Page 20
Compleat



Page 21
Fertiplant Boron & Horizon



Page 22
Fertigation



Page 23
NPK water soluble



Page 24
NPK water soluble fertilizers



Page 28
Fertiplant water soluble raw materials



Page 32
Active IDHA



Page 33
Active Bor



Page 34
Fe HBED 7%



Page 35
Glamofor



Page 36
Indicative soil pH values for crops



Page 37
Soil pH values and nutrients availability



Page 38
Nutrition plan for cereals



Page 39
Nutrition plan for citrus



Page 40
Nutrition plan for olive



Page 41
Nutrition plan for vine



Page 42
Nutrition plan for corn



Page 43
Nutrition plan for cotton

CONTINUOUS DEVELOPMENT FOR 50 YEARS

1969

In 1969, Gavriel, a purely Greek company, was founded and started its activity in the agricultural sector. 15 years later, Gavriel brothers took over the family business and focused, exclusively, in the sector of fertilizers, setting up the manufacturing unit in the area of Argos.

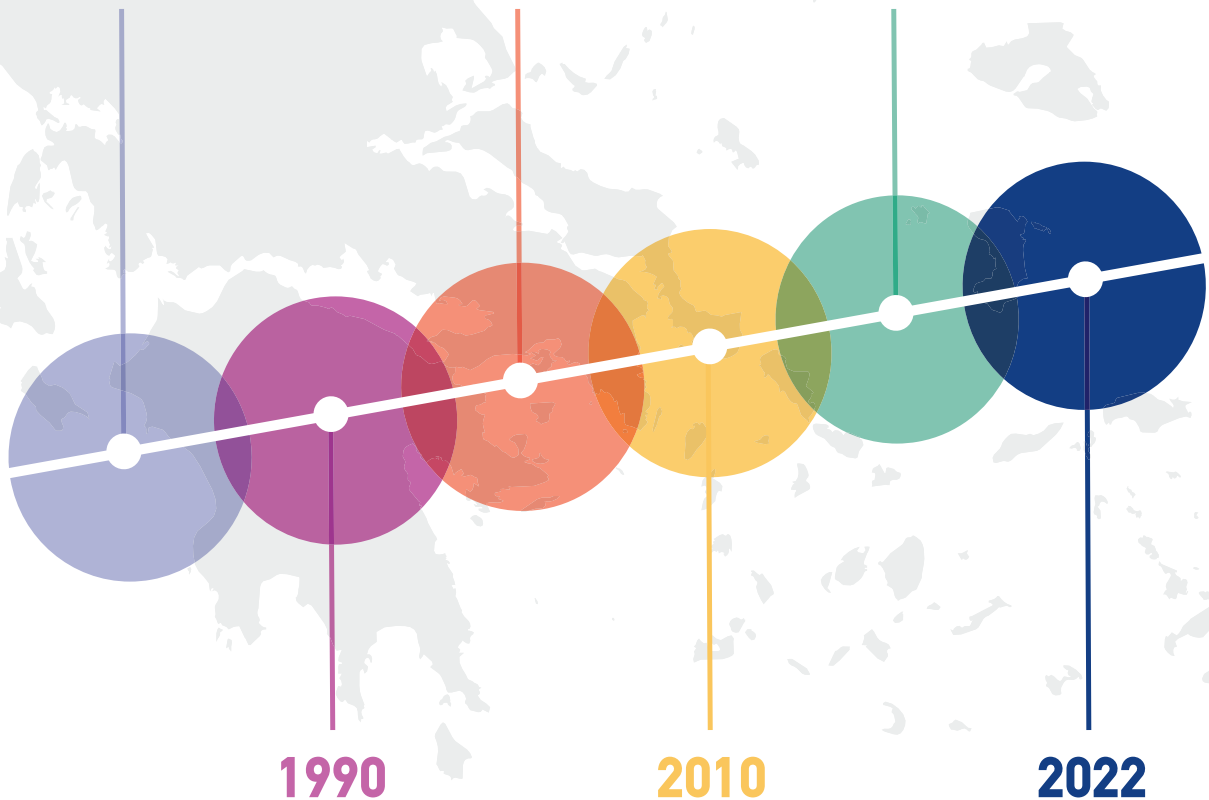
Due to business acumen and persistence for constant development, critical decisions are taken triggering evolution. Gavriel company keeps gaining trust and increasing its share in the Market.

2009

The company operates its second state-of-the-art factory, in privately owned facilities located in Volos. This investment exceeds €8 million. The company dynamically increases its sales all over Greece and 5 years later, it expands its external storage areas buying a plot of land adjacent to the factory of Volos.

2018

The 3rd manufacturing unit, located in privately owned facilities in the industrial area of Kavala, starts operation. This investment exceeded €8 million aiming to the increase of the company's export activity in the Balkans and Mediterranean countries.



1990

Gavriel company expands its facilities in a plot of land adjacent to Argos factory. The company's storage capacity reaches 24000 tons of packaged and bulk fertilizer in total.

2010

Gavriel starts its collaboration, under exclusive terms, with the American company Koch Agronomic Services (the largest producer of stabilized fertilizers worldwide) and undertakes the exclusive distribution of urease inhibitor in the Balkans and Cyprus.

2022

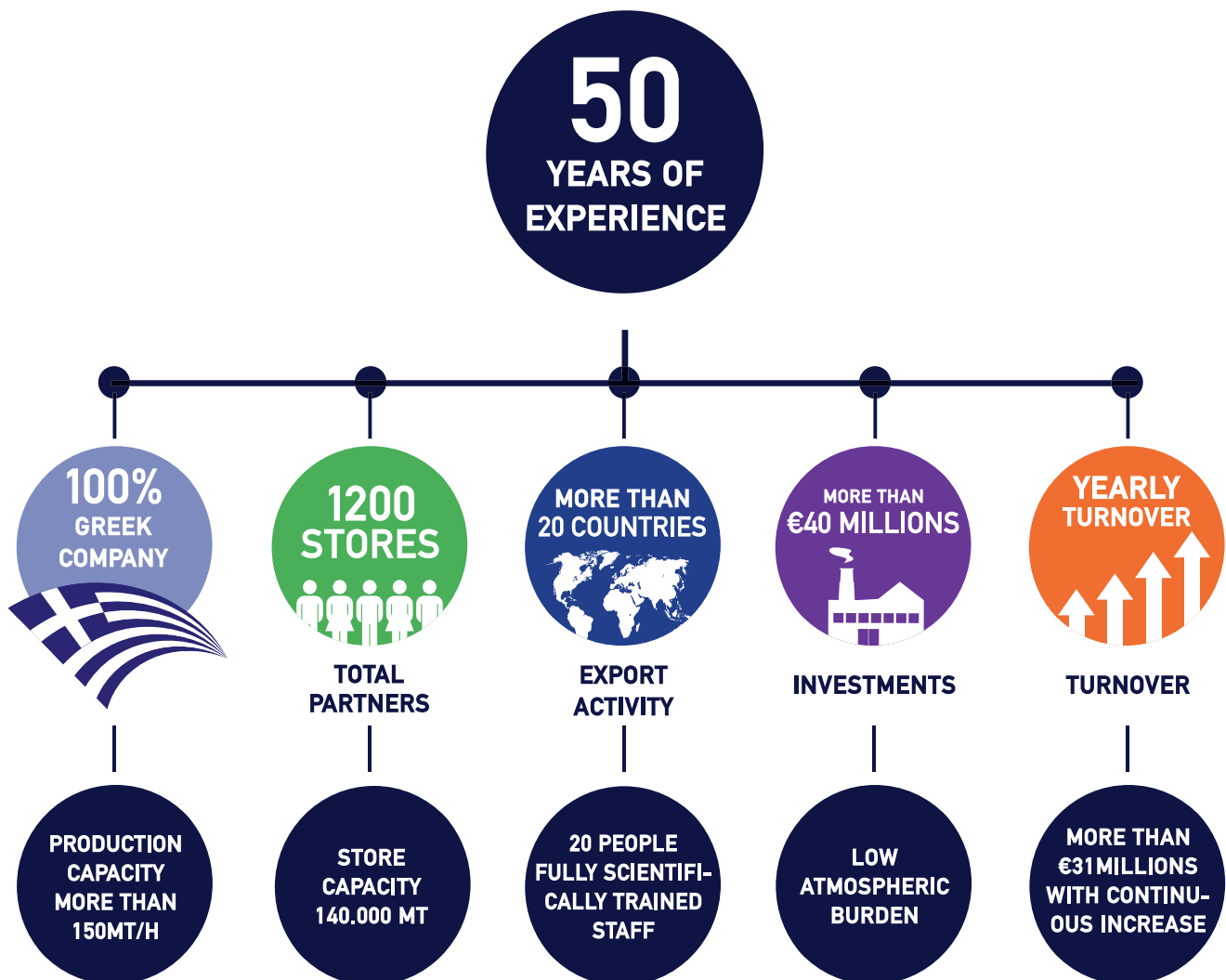
The production line of Volos factory is totally replaced by a new one originating from Germany. With this investment which exceeded €1.5 million, the production and packaging capacity of Volos factory exceeds 60 tons per hour.

MORE THAN 50 YEARS OF EXPERIENCE

Today, Gavriel completes more than 50 years of presence in the agricultural sector and is a leader in the field of crop nutrition in Greece. It owns three state-of-the-art factories in Argos, Volos and Kavala geographically covering all over Greece. The company's factories meet all environmental standards. This results in low atmospheric burden due to pollutant emissions. The strong collaborations of Gavriel company are fully reflected in the Greek area, as the partners stores exceed 1200 in number. Also, the extroversion of the company is reflected to its export activity where it exports to more than 20 counties. Gavriel's total investments in facilities exceed € 40,000,000. The production capacity of all three factories exceeds 150 tn of fertilizer per hour in total. Their storage capacity is over 140,000 tons of fertilizer in bulk and packaged, indoors and outdoors. In addition, Gavriel company constantly invests in human resources, providing continuous training and professional evolution prospects. It employs a total of more than 50 people of fully scientifically trained staff. The sales and marketing departments consist of 20 scientists- agronomists, who provide excellent services before and after sales.

Gavriel Company remains committed to its goal. Insists on searching, finding and promoting high-tech and efficient products, which are guaranteed to increase producers' yields and maximize their profit, ensuring their sustainability, always with undivided respect for the natural environment. Companions in the daily achievement of Gavriel company's goals are the strong partnerships with the largest fertilizer manufacturers worldwide, such as U.B.E, Alexfert, Uralchem, Yara, Ameropa, I.C.L. Group, Indagro, Adob, Agrolinz, Koch Agronomic Services LLC. etc. ensuring, consistently, the excellent quality of the final products that Gavriel Company distributes itself.

With fundamental principles such as reliability, respect for human relations and the natural environment, Gavriel company remains faithful to its objective. Our goal is to help all the links of the agricultural production chain and cultivate our future!



Future belongs to those who are getting prepared of it!

At **Gavriel** company, we invest in our country, research, technology, innovation, quality and human relationships.

Our main goal is to actively participate in the sustainability of all parties that take part in the agricultural chain with the goal of meeting global nutritional needs to the maximum degree.

Holding a dominant position in the field of fertilization in the Greek area and having integrity and reliability as our fundamental principles, we provide a full range of top fertilizers, granular and water soluble, for integrated nutrition solutions that fully meet the requirements of the growers and the conditions of Greek soils and climate.

Our main concern is to promote modern, certified products enhanced with new technologies. The production of our products is carried out in accordance with the standards set by the current Legislation and they are characterized as New Type and CE.

The addition of new technologies advocates the reduction of nutrients losses giving the fertilizers increased efficiency and effectiveness. In this way, the proper use of the company's nutrition products ensures the increase of yields in a wide range of crops and the production of excellent quality products.

The high quality, certified, economic, effective **Gavriel** fertilizers guarantee a better crop, a largest profit as also satisfied and viable producers.

Cultivate with Gavriel fertilizers. Cultivate your future!



Contact Gavriel:



Headquarters
 Melitos 9 & Kidonion str.
 Nea Smyrni 17121
 Tel: 0030 210 9373770-2
 Fax: 0030 210 9373773
E-mail: central@gavriel.gr
Website: www.gavriel.gr



Argos Factory
 4th km Argos-Tripoli
 Argos 21200
 Tel: 0030 27510 66909
 Fax: 0030 27510 69489



Volos Factory
 2nd Industrial Area of Volos
 Volos 37500
 Tel: 0030 24250 22204
 Fax: 0030 24250 22782



Kavala Factory
 Industrial area of Kavala
 Kavala 64200
 Tel: 0030 2510 361547
 Fax: 0030 2510 361601

| AREA | SALES MANAGER | TELEPHONE |
|---|---|------------------|
| DRAMA-KAVALA-RODOPI-EVROS-XANTHI | Sales Manager of Thraki | +30 6981 224 497 |
| THESSALONIKI-HALKIDIKI-KASTORIA-FLORINA- IMATHIA-PIERIA-GREVENA | Sales Manager of Central and Eastern Macedonia | +30 6974 070 057 |
| KILKIS-SERRES-PELLA-KOZANI | Sales Manager of West Macedonia | +30 6982 982 758 |
| LARISSA-MAGNISIA-KARDITSA-TRIKALA | Sales Manager of Thessalia | +30 6972 815 594 |
| IOANNINA-THESPROTIA-ARTA-PREVEZA- AITOLOAKARNANIA-KERKIRA-ITHAKI-LEFKADA | Sales Manager of Western Central Greece and Epirus | +30 6974 664 410 |
| FTHIOTIDA-VIOTIA-FOKIDA-EVIA-N.E AEGEAN SEA- CYCLADES-ATTIKI | Sales Manager of Central Greece and Islands | +30 6973 733 986 |
| ARGOLIDA-KORINTHOS-ARKADIA-LAKONIA | Sales Manager of Eastern Peloponnese | +30 6972 848 820 |
| MESSINIA-ILIA-ACHAIA-KEFALLONIA-ZAKYNTHOS | Sales Manager of Western Peloponnese | +30 6972 848 810 |
| CHANIA-RETHYMNO-IRAKLEIO-LASSITHI-DODEKANISSA | Sales Manager of Crete | +30 6972 666 091 |

| BANKING ACCOUNTS | |
|------------------|-----------------------------------|
| ETHNIKI | GR54 0110 1900 0000 1904 7088 653 |
| PIRAEUS | GR03 0171 3900 0063 9004 0031 108 |
| ALPHA | GR20 0140 2590 2590 0232 0000 326 |
| EUROBANK | GR88 0260 0590 0004 8020 0157 325 |

Cultivate your future! Cultivate with GAVRIEL fertilizers!

We provide complete nutrition solutions!

We propose integrated nutrition solutions based on our long experience and scientific knowledge of the crops' nutritional needs and soil's nutrients activity.

We offer a wide range of products including granular and water-soluble nutrients which meet even the most demanding nutritional needs. Through fertilizers of new and traditional technology, we contribute to the production of agricultural products of high quality and nutritional value, ensuring a sustainable future for the growers and the entire agricultural chain.

Granular fertilizers



NUTRIMORE

A complete range of stabilized fertilizers, enhanced with AGROTAIN urease inhibitor. The products are characterized by zero nitrogen losses, ensuring maximum efficacy and high yields crops.



NUTRIMAX

A complete range of fertilizers for basic fertilization, enhanced with 2 technologies. The unique phosphorus activator, Nu-Trax P+ for immediate development of the root system and Agrotain, the urease inhibitor, ensuring zero nitrogen losses.



IDEAL FER

A complete range of traditional compound granular fertilizers with guaranteed composition per grain. There are types suitable for every stage of crop's growth.





CERES

A complete range of dense bulk blending fertilizers for a targeted and specialized nutrition, meeting even the most demanding needs.



COMPLET

A traditional type which offers increased fruiting and high quality crops.



HORIZON

A complete range of inorganic trace elements for targeted and prolonged nutrition.



Prilled fertilizers and others...



ATLAS, CRONOS, VERASOL, FERTITOP, FERTIPLANT

Complete ranges of crystal, 100% water soluble NPK fertilizers made from high quality and purity prilled raw materials. There is a wide range of types for specialized nutrition and increased production.



FERTIPLANT

Premium quality crystal, water-soluble raw materials of high purity and excellent solubility. Ideal solution for targeted nutrition depending on the stage of the cultivation.



ACTIVE PLUS

A complete range of crystal, 100% water soluble NPK fertilizers. They are reinforced with animal origin amino acids and are ideal for strengthening plants after stress conditions.





COMPLET SOLUBLE

A complete range of crystal, 100% water soluble NPK fertilizers which are enhanced with a high concentration of trace elements. The ideal solution for very demanding growers.



PLANT SOIL

Suitable soil for professional use.



CHELATED TRACE ELEMENTS

Wide range of new technology chelated trace elements, with the unique feature of biodegradability. Suitable for the immediate treatment of nutrients deficiencies.



Your crops need NUTRIMORE to achieve high yields!

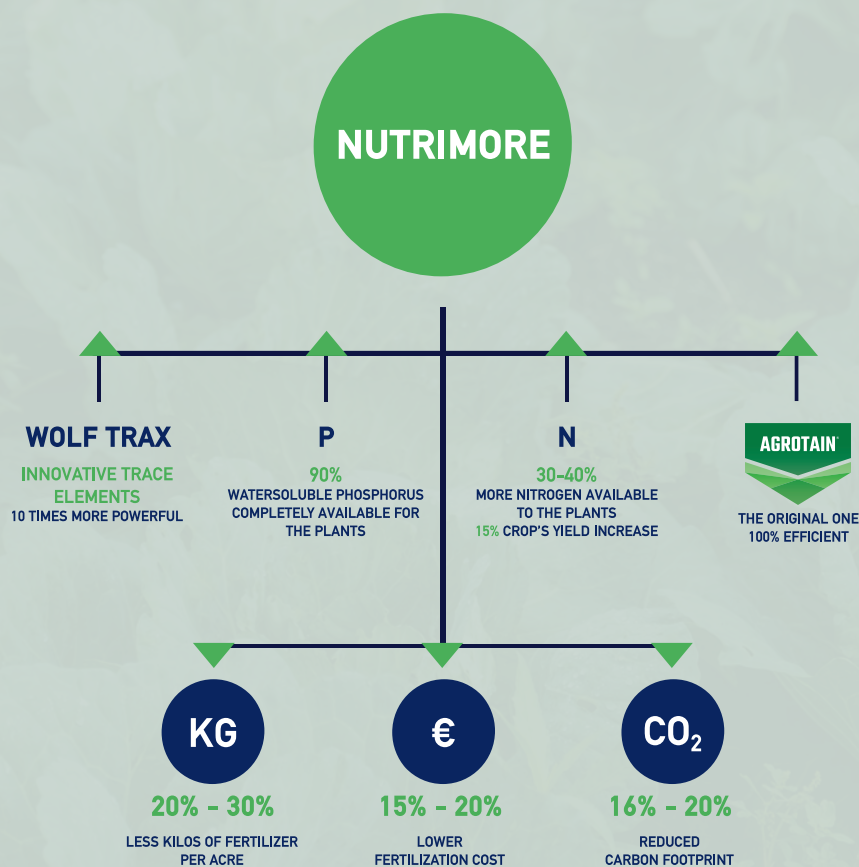
NUTRIMORE is a complete range of innovative fertilizers of new technology, enhanced with the urease stabilizer **AGROTAIN**, a product from **Koch Agronomic Services** which is the largest producer of fertilizers worldwide.

It is worth noting that Gavriel is the company which introduced the urease stabilizer in the Greek Market.

NUTRIMORE combines reduced production costs, effectiveness, increased yields and a guaranteed profit!

- The presence of **AGROTAIN** in **NUTRIMORE** range products protects urea nitrogen and eliminates the losses due to evaporation. The whole quantity of nitrogen present in the fertilizer reaches the plants and the crop is getting increased by, at least, **10-15%**!
- Phosphorus included in **NUTRIMORE** products is water-soluble in a percentage higher than 90% and thus fully assimilable by the plants.
- The trace elements are in the innovative formula of **DDP** which allows them to be 10 times more powerful than the common ones.
- Option for producing to order, special types of fertilizers for diversification and targeted nutrition.

A 2-year experiment carried out in the University of Thessaly has also confirmed the superiority of **NUTRIMORE** products, demonstrating a yield increase of at least 10-15% against the common fertilizers. Also, thousands of satisfied growers who have been using **nutrimore** fertilizers for over 12 years established them as one of the most reliable solutions in the field of stabilized fertilizers.



NUTRIMORE N

The top choice to not lose a single nitrogen unit!
The only ones with DOUBLE protection shield!

| FERTILIZER TYPE | Nitrogen-N | | | | TE DDP (Wolf Trax)% | | | | | Application | | |
|-----------------|------------|---------|--------------|-----------------------------|---------------------|------|------|--------|------------|-------------|-------------------------|-------------|
| | Total % | Ureic % | Ammoniacal % | Sulphur (SO ₃)% | B | Fe | Zn | Bag kg | Palette kg | Dispersion | Fertilizer distribution | Fertigation |
| N-PLUS | 46 | 46 | - | - | - | - | - | 40 | 1.600 | ✓ | ✓ | ✓ |
| WINNER | 40 | 34,5 | 5,5 | 14,5 | - | - | - | 25/40 | 1575/1600 | ✓ | ✓ | ✓ |
| WINNER BOR | 40 | 34,5 | 5,5 | 14,5 | 0,06 | - | - | 25 | 1.575 | ✓ | ✓ | ✓ |
| WINNER COMBI | 40 | 34,5 | 5,5 | 14,5 | - | 0,09 | 0,09 | 25/40 | 1575/1600 | ✓ | ✓ | ✓ |
| WINNER Fe | 40 | 34,5 | 5,5 | 14,5 | - | 0,09 | - | 25 | 1.575 | ✓ | ✓ | ✓ |
| 42-00-00 | 42 | 38,2 | 3,8 | 10,2 | - | - | - | 40 | 1.600 | ✓ | ✓ | ✓ |
| 36-00-00 | 36 | 27,6 | 8,4 | 24 | - | - | - | 40 | 1.600 | ✓ | ✓ | ✓ |



2X
Double
protection
shield



AGROTAIN included in the fertilizers ensures zero losses of nitrogen due to evaporation, so more nitrogen is available to the plants and crops increase by 10-15%.

All Nutrimore Winner products are enhanced with a **double protection shield**:

The original Agrotain with a unique composition and a less acidic ammonia sulphate of special specifications. This results to a long shelf life of at least 1 year after the packing date.

The DDP-Wolf Trax innovative trace elements are enhanced with 3 new technologies and are 10 times more powerful than common trace elements. They evenly cover all the fertilizer's granules, ensuring perfect dispersion. Furthermore, they are not bound to the soil regardless of the soil's pH and provide both immediate and continuous nutrition, in two phases, with optimum results.

There is also the option of producing any formula to order, in order to achieve differentiation and targeted nutrition.

100% water soluble fertilizers. Application through: dispersion, fertilizer distributor and fertigation.

DOSAGE: The dosage depends on the crop and the nutritional status of the soil. For more information, please contact directly Gavriel company and the local agriculturists collaborating with the company.



NUTRIMORE NP

The ideal combination of nitrogen and phosphorus!



| FERTILIZER TYPE | Nitrogen-N | | | Phosphorus (P205)% | Sulphur (SO ₃)% | Zn DDP (Wolf Trax)% | Bag kg | Palette kg | Application | | |
|-----------------|------------|---------|--------------|--------------------|-----------------------------|---------------------|--------|------------|-------------|-------------------------|-------------|
| | Total % | Ureic % | Ammoniacal % | | | | | | Dispersion | Fertilizer distribution | Fertigation |
| 18-28-00 | 18 | 1,8 | 16,2 | 28 | 14,6 | - | 40 | 1.600 | ✓ | ✓ | - |
| 20-24-00 | 20 | 4,9 | 15,1 | 24 | 16 | - | 40 | 1.600 | ✓ | ✓ | - |
| 20-40-00 | 20 | 4 | 16 | 40 | - | - | 25 | 1.575 | ✓ | ✓ | - |
| 25-15-00 | 25 | 13,5 | 11,5 | 15 | 16,3 | - | 40 | 1.600 | ✓ | ✓ | - |
| 30-15-00 | 30 | 26,5 | 3,5 | 15 | 5 | - | 40 | 1.600 | ✓ | ✓ | - |
| 30-15-00+Zn | 30 | 22,5 | 7,5 | 15 | 5 | 0,06 | 40 | 1.600 | ✓ | ✓ | - |



DOSAGE: The dosage depends on the crop and the nutritional status of the soil. For more information, please contact directly Gavriel company and the local agriculturists collaborating with the company.



NUTRIMORE NPK

Complete nutrition!

| FERTILIZER TYPE | Nitrogen-N | | | | | | | TE DDP (Wolf Trax)% | | | | | Application | | |
|------------------------|------------|---------|--------------|---------------------|-------------------|-------------------|------------------------------|---------------------|------|-------|--------|------------|-------------|-------------------------|-------------|
| | Total % | Ureic % | Ammoniacal % | Phosphorus (P2O5) % | Potassium (K2O) % | Magnesium (MgO) % | Sulphur (SO ₃) % | B | Fe | Zn | Bag kg | Palette kg | Dispersion | Fertilizer distribution | Fertigation |
| 10-00-40(S) | 10 | 10 | - | - | 40 | - | 34 | - | - | - | 25 | 1575 | ✓ | ✓ | - |
| 15-10-18(S)+3MgO | 15 | 8,5 | 6,5 | 10 | 18 | 3 | 27 | - | - | - | 25 | 1575 | ✓ | ✓ | - |
| 20-10-10(S) | 20 | 8,7 | 11,3 | 10 | 10 | - | 31 | - | - | - | 40 | 1600 | ✓ | ✓ | - |
| 20-10-15(S)+2MgO+Fe+Zn | 20 | 15,8 | 4,2 | 10 | 15 | 2 | 18 | - | 0,13 | 0,09 | 25 | 1575 | ✓ | ✓ | - |
| 15-15-15(S) | 15 | 3 | 12 | 15 | 15 | - | 29 | - | - | - | 25/40 | 1575/1600 | ✓ | ✓ | - |
| 15-15-15(S)+Fe+Zn | 15 | 3,7 | 11,3 | 15 | 15 | - | 29 | - | 0,13 | 0,06 | 25 | 1575 | ✓ | ✓ | - |
| 20-05-10(S)+2MgO+B | 20 | 10,6 | 9,4 | 5 | 10 | 2 | 33 | 0,04 | - | - | 25 | 1575 | ✓ | ✓ | - |
| 20-06-14(S)+B | 20 | 10,6 | 9,4 | 6 | 14 | - | 31 | 0,04 | - | - | 25 | 1575 | ✓ | ✓ | - |
| 15-15-15(M) | 15 | 2 | 13 | 15 | 15 | - | 21 | - | - | - | 40 | 1600 | ✓ | ✓ | - |
| 20-06-14(M)+B | 20 | 9,5 | 10,5 | 6 | 14 | - | 24 | 0,04 | - | - | 25/40 | 1575/1600 | ✓ | ✓ | - |
| 20-7-12(M)+2MgO+B | 20 | 11 | 9 | 7 | 12 | 2 | 23 | 0,04 | - | - | 25/40 | 1575/1600 | ✓ | ✓ | - |
| 21-07-17(M)+2MgO+B | 21 | 15,5 | 5,5 | 7 | 17 | 2 | 11,3 | 0,04 | - | - | 40 | 1600 | ✓ | ✓ | - |
| 21-07-17(M)+2MgO+Fe+Zn | 21 | 15,5 | 5,5 | 7 | 17 | 2 | 11,3 | - | 0,13 | 0,06 | 25 | 1575 | ✓ | ✓ | - |
| 25-05-20(M)+B | 25 | 21,6 | 3,4 | 5 | 20 | - | - | 0,04 | - | - | 25 | 1575 | ✓ | ✓ | - |
| 20-10-10(M) | 20 | 7,8 | 12,2 | 10 | 10 | - | 25,5 | - | - | - | 40 | 1600 | ✓ | ✓ | - |
| 25-15-05(M) | 25 | 15,8 | 9,2 | 15 | 05 | - | 8 | - | - | - | 40 | 1600 | ✓ | ✓ | - |
| 25-15-05(M)+Zn DDP | 25 | 16 | 9 | 15 | 5 | - | 8 | - | - | 0,065 | 40 | 1600 | ✓ | ✓ | - |
| 24-08-08(M)+Zn | 24 | 16 | 8 | 8 | 8 | - | 14,7 | - | - | 0,065 | 40 | 1600 | ✓ | ✓ | - |
| 27-07-07(M)+Zn | 27 | 20 | 7 | 7 | 7 | - | 11,4 | - | - | 0,065 | 40 | 1600 | ✓ | ✓ | - |
| 30-06-06(M)+Zn | 30 | 26 | 4 | 6 | 6 | - | 6,8 | - | - | 0,09 | 40 | 1600 | ✓ | ✓ | - |



DOSAGE: The dosage depends on the crop and the nutritional status of the soil. For more information please contact directly Gavriel company and the local agriculturists collaborating with the company.



NUTRIMAX P+ + TE

One product-Two innovations!

Nutrimax P+ nutrition products provide the ideal combination of nutritional elements for a strong start. They are fertilizers of 2 innovations, inspired by the future!



NU-TRAX P+: All the granules are enhanced with the innovative NU-TRAX P+, providing an ideal nutrition at the very early stages of the plant's installation and a strong start.



NU-TRAX P+ is a blend of phosphorus, zinc, manganese and nitrogen. These nutrients are proven to be essential for the first steps of the young roots growth. NU-TRAX P+ is specially designed in order to ensure the presence of the necessary nutrients in the first growth stages of the young roots, right after germination. In this way, crops are given a strong boost at the early stages of their growth. It is an ideal proposal for the early stages of frozen, wet soils.



AGROTAIN innovation: Elimination of urea nitrogen losses and guarantee for increased growth and high yields.

By choosing Nutrimax P+ we achieve:

Excellent nutrition at early stages. The complex NU-TRAX P+, included in the products, contributes to the rapid growth of a rich root system for stronger and robust plants and the early growth of the crops.

Complete nutrition: The plants are provided with sufficient nitrogen units of new technology, enhanced with AGROTAIN for zero nitrogen losses. The water solubility of phosphorus exceeds the ratio of 90%, making it immediately absorbable by the plants.



Wheat



Soy



Corn



Carrot

NUTRIMAX P+ +TE

Rapid installation-earliest cultivation!

| FERTILIZER TYPE | Nitrogen-N | | | | | | | TE DDP (Wolf Trax)% | | | | | Application | | |
|---------------------|------------|---------|--------------|--------------------|-------------------|------------------|-----------------------------|---------------------|----|------|--------|------------|-------------|-------------------------|-------------|
| | Total % | Ureic % | Ammoniacal % | Phosphorus (P2O5)% | Potassium (K2O) % | Magnesium (MgO)% | Sulphur (SO ₃)% | Mn | Fe | Zn | Bag kg | Palette kg | Dispersion | Fertilizer distribution | Fertigation |
| 15-30-0+TE | 15 | - | 15 | 30 | - | - | 12 | 0,03 | - | 0,09 | 40 | 1.600 | ✓ | ✓ | - |
| 20-20-0+TE | 20 | 4,7 | 15,3 | 20 | - | - | 21,6 | 0,03 | - | 0,09 | 40 | 1.600 | ✓ | ✓ | - |
| 26-13-0+TE | 26 | 14,7 | 11,3 | 13 | - | - | 17,5 | 0,03 | - | 0,09 | 40 | 1.600 | ✓ | ✓ | - |
| 14-10-18(S)+2MgO+TE | 14 | 6 | 8 | 10 | 18 | 2 | 29,5 | 0,03 | - | 0,09 | 40 | 1.600 | ✓ | ✓ | - |
| 22-12-12+TE | 22 | 13,8 | 8,2 | 12 | 12 | - | 11,5 | 0,03 | - | 0,09 | 40 | 1.600 | ✓ | ✓ | - |
| 28-8-8+TE | 28 | 23,7 | 4,3 | 8 | 8 | - | 7,5 | 0,03 | - | 0,09 | 40 | 1.600 | ✓ | ✓ | - |



Option for the production of formulas which meet the special requirements of the crop.



DOSAGE: The dosage depends on the crop and the nutritional status of the soil. For more information, please contact directly Gavriel company and local agriculturists collaborating with the company.



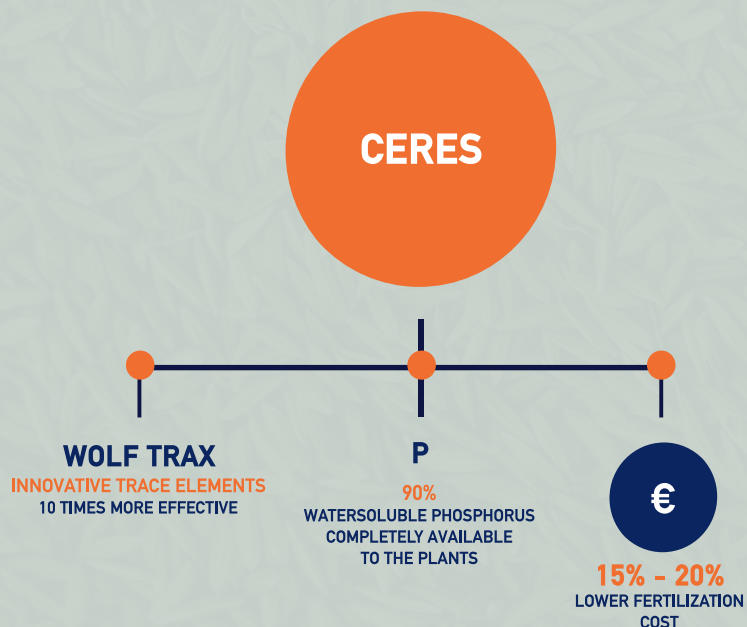
CERES

The ideal solution for flexible applications!

A complete range of fertilizers for flexible applications!

They combine economy, effectiveness, increased yields and guarantee for profit!

- Nutrients made from raw materials of excellent quality and uniform granulation.
- There is the option of choosing dense types with low cost per nutrition unit and option to use less kilos of fertilizer per acre. In this way, we reduce working hours and fertilizer application cost.
- Phosphorus water solubility exceeds the ratio of 90% and is immediately absorbable by the plants.
- The trace elements are in the innovative DDP formula and 10 times more powerful than the common ones.
- We produce any type of fertilizer, upon order, for diversification and specialized nutrition.



CERES

The ideal solution for flexible applications!

| FERTILIZER TYPE | Nitrogen-N | | | | | | | TE DDP (Wolf Trax)% | | | | | Application | | |
|------------------------------|------------|---------|--------------|--------------------|------------------|------------------|-----------------------------|---------------------|-----|----|--------|-------------|-------------|-------------------------|-------------|
| | Total % | Ureic % | Ammoniacal % | Phosphorus (P2O5)% | Potassium (K2O)% | Magnesium (MgO)% | Sulphur (SO ₃)% | B | Fe | Zn | Bag kg | Palette kg | Dispersion | Fertilizer distribution | Fertigation |
| 40-00-00 | 40 | 34,5 | 5,5 | - | - | - | 14,5 | - | - | - | 40 | 1.600 | ✓ | ✓ | ✓ |
| 46-00-00 PRILLED | 46 | 46 | - | - | - | - | - | - | - | - | 40 | 1.600 | ✓ | ✓ | ✓ |
| 16-20-00 | 16 | | 16 | 20 | - | - | 27,6 | - | - | - | 40 | 1.600 | ✓ | ✓ | - |
| 18-18-00 | 18 | 1 | 17 | 18 | - | - | 28,8 | - | - | - | 40 | 1.600 | ✓ | ✓ | - |
| 20-20-00 | 20 | 2 | 18 | 20 | - | - | 30 | - | - | - | 40 | 1.600 | ✓ | ✓ | - |
| 22-11-00 | 22 | 8,3 | 13,7 | 11 | - | - | 27,6 | - | - | - | 40 | 1.600 | ✓ | ✓ | - |
| 24-12-00 | 24 | 12 | 12 | 12 | - | - | 21,6 | - | - | - | 40 | 1.600 | ✓ | ✓ | - |
| 11-15-15M | 11 | - | 11 | 15 | - | - | 15 | - | - | - | 25/ 40 | 1.575 1.600 | ✓ | ✓ | - |
| 11-15-15S | 11 | - | 11 | 15 | - | - | 32,3 | - | - | - | 25/ 40 | 1.575 1.600 | ✓ | ✓ | - |
| 05-26-15(M) | 5 | - | 5 | 26 | 15 | - | - | - | - | - | 40 | 1.600 | ✓ | ✓ | - |
| 08-15-20(S) | 8 | - | 8 | 15 | 20 | - | 24,6 | - | - | - | 40 | 1.600 | ✓ | ✓ | - |
| 08-16-24(S) | 8 | - | 8 | 16 | 24 | - | 27 | - | - | - | 40 | 1.600 | ✓ | ✓ | - |
| 12-12-17 (M)+0,13Fe WolfTrax | 12 | - | 12 | 12 | 17 | - | 26,5 | - | 0,1 | - | 25 | 1575 | ✓ | ✓ | - |
| 18-6-12 (M)+0,04B WolfTrax | 18 | 4 | 14 | 12 | 16 | - | 33 | 0,04 | - | - | 25 | 1575 | ✓ | ✓ | - |
| 20-10-10(M)+B | 20 | 7,4 | 12,6 | 10 | 10 | - | 25 | 0,04 | - | - | 40 | 1.600 | ✓ | ✓ | - |
| 00-10-30(S)+2MgO+B | - | - | - | 10 | 30 | 2 | 30 | 0,04 | - | - | 25 | 1.575 | ✓ | ✓ | - |
| 00-25-15(S) | - | - | - | 25 | 15 | - | 12 | - | - | - | 40 | 1.600 | ✓ | ✓ | - |
| 00-20-20(M) | - | - | - | 20 | 20 | - | - | - | - | - | 40 | 1.600 | ✓ | ✓ | - |
| 00-25-25(M) | - | - | - | 25 | 25 | - | - | - | - | - | 40 | 1.600 | ✓ | ✓ | - |



High density and high-quality fertilizers.

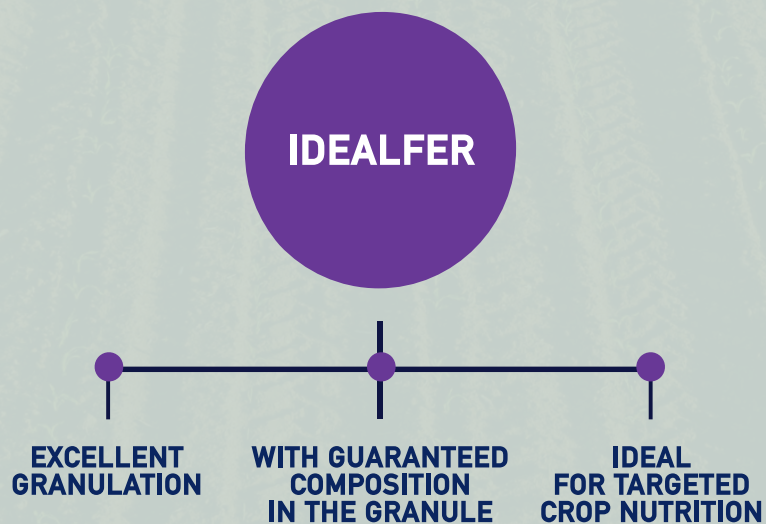
DOSAGE: The dosage depends on the crop and the nutritional status of the soil. For more information, please contact directly Gavriel company and the local agriculturists collaborating with the company.



IDEALFER

Guaranteed composition in each granule!

- Nutrition products of premium quality and granulation.
- Every single granule has the same nutrients composition.
- There is the option of choosing the proper formula meeting the requirements and growth stage of each crop.
- There are types enhanced with Wolf Trax DDP technology trace elements which are 10 times more powerful than the common ones. Through WolfTrax technology, all the granules are evenly covered by the trace elements in order to achieve the optimum dispersion in the field. They are not bound to the soil and provide an immediate and prolonged nutrition in 2 times.



IDEALFER

Guaranteed composition in each granule!



| FERTILIZER TYPE | Nitrogen-N | | | | | | | | TE DDP (Wolf Trax)% | | | | | Application | | |
|---|------------|---------|--------------|----------|--------------------|-------------------|------------------|-----------------------------|---------------------|------|------|--------|------------|-------------|-------------------------|-------------|
| | Total % | Ureic % | Ammoniacal % | Nitric % | Phosphorus (P2O5)% | Potassium (K2O) % | Magnesium (MgO)% | Sulphur (SO ₂)% | B | Fe | Zn | Bag kg | Palette kg | Dispersion | Fertilizer distribution | Fertigation |
| N AMMONIUM SULPHATE 21-0-0 +60 SO ₃ Crystalline 100% Water-soluble | 21 | - | 21 | - | - | - | - | 60 | - | - | - | 40 | 1.600 | ✓ | - | ✓ |
| 21-0-0+Fe, Zn (Fe, Zn Wolf Trax) Ammonium Sulphate with Fe και Zn 100% Water-soluble | 21 | - | 21 | - | - | - | - | 60 | - | 0,13 | 0,06 | 25 | 1.575 | | | |
| BOR-AS 21-0-0+B (B Wolf Trax) Crystalline with Boron 100% Water-soluble | 21 | - | 21 | - | - | - | - | 58 | 0,04 | - | - | 25 | 1.575 | ✓ | - | ✓ |
| AMMONIUM SULPHATE GRANULAR 21-0-0+60 SO ₃ 100% Water-soluble | 21 | - | - | - | - | - | - | 60 | - | - | - | 40 | 1.600 | ✓ | ✓ | ✓ |
| 26-0-0 Calcium Ammonium Nitrate | 26 | - | 13 | 13 | - | - | - | - | - | - | - | 40 | 1.600 | ✓ | ✓ | - |
| 26-0-0+ B (B Wolf Trax) Calcium Ammonium Nitrate with Boron | 26 | - | 13 | 13 | - | - | - | - | 0,04 | - | - | 40 | 1.600 | ✓ | ✓ | - |
| (34,5-0-0) 100% water-soluble Ammonium Nitrate | 34,5 | - | 17,25 | 17,25 | - | - | - | - | - | - | - | 40 | 1.600 | ✓ | ✓ | ✓ |
| UREA GRANULAR 100% water-soluble (46-0-0) | 46 | 46 | - | - | - | - | - | - | - | - | - | 40 | 1.600 | ✓ | ✓ | ✓ |
| P SINGLE SUPERPHOSPHATE 0-20-0 | - | - | - | - | 20 | - | - | - | - | - | - | 40 | 1.600 | ✓ | ✓ | - |
| TRIPLE SUPERPHOSPHATE 0-46-0 | - | - | - | - | 46 | - | - | - | - | - | - | 40 | 1.600 | ✓ | ✓ | - |
| K Granular POTASSIUM SULPHATE from Germany 0-0-50 +45 SO ₃ Bio | - | - | - | - | - | 50 | - | 45 | - | - | - | 25 | 1.575 | ✓ | ✓ | - |
| GRANULAR POTASSIUM SULPHATE from Germany 0-0-30+10MgO +42 SO ₃ Bio | - | - | - | - | - | 30 | 10 | 42,5 | - | - | - | 25 | 1.575 | ✓ | ✓ | - |
| POTASSIUM CHLORIDE granular 0-0-60 | - | - | - | - | - | 60 | - | - | - | - | - | 40 | 1.600 | ✓ | ✓ | - |



Option of choosing the proper formula according to the growth stage of the crop.

Premium quality fertilizers, with guaranteed composition in every granule.

There are types enhanced with Wolf Trax DDP technology trace elements which are 10 times more powerful than the common ones. Through WolfTrax technology, all the granules are evenly covered by the trace elements in order to achieve the optimum dispersion in the field. They are not bound to the soil and provide an immediate and prolonged nutrition in 2 times.

DOSAGE: The dosage depends on the crop and the nutritional status of the soil. For more information, please contact directly Gavriel company and the local agriculturists collaborating with the company.



COMPLET

The ideal formula for the enhancement of fruiting!
A 12-12-17+TE fertilizer of unique characteristics.

| FERTILIZER TYPE | Nitrogen-N | | | | | | | TE DDP (Wolf Trax)% | | | | | Application | | |
|------------------|------------|---------|--------------|--------------------|-------------------|------------------|-----------------------------|---------------------|------|------|--------|------------|-------------|-------------------------|-------------|
| | Total % | Ureic % | Ammoniacal % | Phosphorus (P2O5)% | Potassium (K2O) % | Magnesium (MgO)% | Sulphur (SO ₃)% | B | Fe | Zn | Bag kg | Palette kg | Dispersion | Fertilizer distribution | Fertigation |
| 12-12-17+2MgO+TE | 12 | 1,4 | 10,6 | 12 | 17 | 2 | 35 | - | 0,04 | 0,04 | 25/40 | 1.575 | ✓ | ✓ | - |
| | | | | | | | | | | | | 1.600 | | | |



The ideal fertilizer formula for an integrated nutrition for all the crops. Suitable for fruiting enhancement.

Phosphorus included is at least 90% water soluble, therefore completely absorbable by the plants.



Potassium included is 100% derived from potassium sulphate.

Enhanced with DDP formulas of Fe and Zn, which are 10 times more powerful than the common trace elements.



Applicable by hand and with a fertilizer spreader.

DOSAGE: The dosage depends on the crop and the nutritional status of the soil. For more information, please contact directly Gavriel company and the local agriculturists collaborating with the company.



FERTIPLANT BORON



| FERTILIZER TYPE | | | | | | Bag kg | Palette kg |
|--|---------|---------|--------------|----------|------------|--------|------------|
| | Total % | Ureic % | Ammoniacal % | Nitric % | Boron (B)% | | |
| FERTIPLANT BORON (6,5-0-0+11B) crystalline | 6,5 | - | 6,5 | - | 11 | 25 | 1225 |

Used as a boron source instead of crystallized Borax $10H_2O$, with 6.5, more, units of ammoniacal nitrogen units.

The ideal formula for better blossoming, successful fertilization and increased fruiting.

HORIZON

Trace minerals for targeted nutrition!

| FERTILIZER TYPE | | | | | | | Bag kg | Palette kg |
|--|------------|--------------|------------|------------|-----------------------------|------------------|--------|------------|
| | Boron (B)% | Copper (Cu)% | Iron (Fe)% | Zinc (Zn)% | Sulphur (SO ₃)% | Magnesium (MgO)% | | |
| Crystallized BORAX decahydrate | 11.5 | - | - | - | - | - | 25 | 1225 |
| Crystallized BORAX pentahydrate | 15 | - | - | - | - | - | 25 | 1225 |
| HORIZON BORAX BIO pentahydrate-granular | 15 | - | - | - | - | - | 25 | 1225 |
| HORIZON Crystallized Zinc Sulphate Heptahydrate | - | - | - | 23 | - | - | 25 | 1225 |
| HORIZON Granular monohydrate Zinc Sulphate | - | - | - | 35 | - | - | 25 | 1225 |
| Anhydrous Magnesium Sulphate | - | - | - | - | - | 33 | 25 | 1225 |
| HORIZON Magnesium Sulphate Grannular BIO | - | - | - | - | 50 | 25 | 25 | 1225 |
| HORIZON Iron Sulphate Granular | - | - | 30 | - | - | - | 25 | 1225 |
| Copper sulphate rock crystal (25% Cu) Manica | - | 25 | - | - | 32.5 | - | 25 | 1500 |
| Copper sulphate powder (25% Cu) (Manica) | - | 25 | - | - | 32.5 | - | 25 | 1500 |
| Copper Sulphate small rock crystal (25% Cu) (Manica) | - | 25 | - | - | 32.5 | - | 25 | 1500 |



Ideal options for targeted nutrition

All the granular formulas are ideal for maintaining the nutrient status of the soil. Crystal formulas are suitable for immediate interventions.

Integrated fertigation solutions for the requirements of modern agriculture.

Fertigation requires precise solutions, with specific schedules which adapt to the plant requirements, achieving rapid results in nutrition.

The products that Gavriel proposes are specialized, have excellent quality and high purity. In this way, the requirements of the plants are fully met, maximizing their yield and quality characteristics.

Gavriel company produces integrated nutrition solutions offering a wide range of water-soluble NPK nutrition products for every stage of crop's growth, FERTIPLANT water-soluble raw materials, chelated trace elements etc.



FERTIPLANT water-soluble raw materials and all the NPK crystal products of GAVRIEL excel at the following points:

They have excellent quality

- They do not contain chlorine, sodium and heavy metals.
- They have high purity and low conductivity.
- The state-of-the-art production lines of GAVRIEL ensure perfect mixing and stability in all production steps of water-soluble NPK fertilizers.

They are 100% water-soluble

- They dissolve immediately and quickly in water and they are immediately absorbed by plants.
- They are suitable for fertigation, without creating blocking problems.
- They are **ideal for foliar applications** thanks to the purity of **FERTIPLANT** raw materials and the NPK crystal fertilizers.

They offer excellent combinations of nutrients

- They provide a wide range of formulas with several combinations of nitrogen, phosphorus, potassium and magnesium.
- They allow targeted fertigation adapted to each stage of crop's growth without wastes.

They are suitable to all crops

- Suitable to greenhouse cultivations and open field crops.
- Suitable to horticulture, vegetables, arboriculture, floriculture, corn, vineyard, etc.

They have a guaranteed composition

- **GAVRIEL** company guarantees for the stable composition and the excellent quality of its products.

Formulas produced up to order

- Apart from the standard types of crystal NPK products, there is also the option for specialized, up to order, products meeting the needs of even the most demanding nutrition plan.

All the crystal NPK products contain the, unique in the Market, Active IDHA chelated trace elements which are immediately biodegraded by the plants.

**No1 in fertigation,
you are not born you become!**

NPK Crystal fertilizers



NPK Crystal fertilizers

| ATLAS, CRONOS, VERASOL, FERTITOP | Nitrogen-N | | | Phosphorus (P2O5)% | | | Potassium (K2O) % | | | Magnesium (MgO)% | | | IDHA* TRACE ELEMENTS IMMEDIATELY BIODEGRADED | | | | | | Application | | | |
|-------------------------------------|--------------|----------|---------|--------------------|------|---|-------------------|--------|--------|------------------|--------|--------|---|--------------------|--------|------------|------------|-------------|----------------------|-------------|--|--|
| | Ammoniacal % | Nitric % | Ureic % | | | | B ppm | Cu ppm | Fe ppm | Mo ppm | Mn ppm | Zn ppm | pH | EC (1% g/µl) mS/cm | Bag kg | Palette kg | Greenhouse | Fertigation | Foliar fertilization | Hydroponics | | |
| 20-20-20+TE * | 4 | 4 | 12 | 20,0 | 20,0 | - | 163 | 33 | 600 | 16 | 163 | 33 | 4.5-5.5 | 8.5 | 25 | 1225 | ✓ | ✓ | ✓ | ✓ | | |
| 18-18-18+TE | 7,8 | 5,1 | 5,1 | 18 | 18 | - | 163 | 33 | 600 | 16 | 163 | 33 | 4.5-5.5 | 8.5 | 25 | 1225 | ✓ | ✓ | ✓ | ✓ | | |
| 30-10-10+TE | 4 | 1,5 | 24,5 | 10 | 10 | - | 163 | 33 | 600 | 16 | 163 | 33 | 4.5-5.5 | 8.5 | 25 | 1225 | ✓ | ✓ | ✓ | ✓ | | |
| 15-30-15+TE * | 6,6 | 0 | 8,4 | 30,0 | 15,0 | - | 163 | 33 | 600 | 16 | 163 | 33 | 4.5-5.5 | 8.5 | 25 | 1225 | ✓ | ✓ | ✓ | ✓ | | |
| 10-52-10+TE * | 8,5 | 1,5 | 0 | 52 | 10 | - | 163 | 33 | 600 | 16 | 163 | 33 | 4.5-5.5 | 8.5 | 25 | 1225 | ✓ | ✓ | ✓ | ✓ | | |
| 12-9-34+2MgO+TE * | 2 | 8 | 2 | 9 | 34 | 2 | 163 | 33 | 600 | 16 | 163 | 33 | 4.5-5.5 | 8.5 | 25 | 1225 | ✓ | ✓ | ✓ | ✓ | | |
| 15-5-30+3MgO+TE | 3 | 8,5 | 3,5 | 5 | 30 | 3 | 163 | 33 | 600 | 16 | 163 | 33 | 4.5-5.5 | 8.5 | 25 | 1225 | ✓ | ✓ | ✓ | ✓ | | |
| 12-48-10+TE | 9,2 | 2 | 0 | 48 | 10 | - | 163 | 33 | 600 | 16 | 163 | 33 | 4.5-5.5 | 8.5 | 25 | 1225 | ✓ | ✓ | ✓ | ✓ | | |
| 20-6-20+TE | 8 | 5,8 | 6,2 | 6 | 20 | - | 163 | 33 | 600 | 16 | 163 | 33 | 4.5-5.5 | 8.5 | 25 | 1225 | ✓ | ✓ | ✓ | ✓ | | |
| 28-07-14+2MgO+TE | 2,5 | 4 | 21,5 | 7 | 14 | 2 | 163 | 33 | 600 | 16 | 163 | 33 | 4.5-5.5 | 8.5 | 25 | 1225 | ✓ | ✓ | ✓ | ✓ | | |

The specific formulas are also supplied in a package of ATLAS 2 kg x 10 pieces.

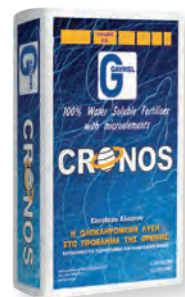
- 100% water-soluble fertilizers of high purity and low conductivity.
- They do not contain Chlorine, Sodium, heavy metals.
- Wide variety of formulas for targeted nutrition. There is the option of choosing types enhanced with magnesium.
- All the formulas are potassium chloride free.
- The only ones in the Greek Market with immediately biodegradable IDHA chelating trace elements.
- Any type can be produced to order.

GENERAL DOSAGE: Foliar fertilizers: 100-400 gr/100 lt of water.

Fertigation: greenhouse and outdoor crops: 2-5 kg/ acre.

The dosage depends on the crop and the nutrient status of the soil. For more information, please contact the Gavriel company and the local agronomists collaborating with the company.

Compatibility: It is allowed to combine with most of the insecticides and herbicides. Not allowed to mix with copper, oily and calcareous or very alkaline formulas. Small-scale testing is recommended before application.



NPK Crystal fertilizers



Fertiplant (S) 100% Water-soluble!
Free of chlorine, with potassium sulphate.

| FERTIPLANT(S) | | | | IDHA* TRACE ELEMENTS IMMEDIATELY BIODEGRADED | | | | | | | | | | Application | | | | | | |
|----------------------|--------------|----------|---------|---|-------------------|------------------|-------|----------|---------|--------|---------|---------|-------|--------------------|--------|------------|------------|-------------|----------------------|-------------|
| | Ammoniacal % | Nitric % | Ureic % | Phosphorus (P2O5)% | Potassium (K2O) % | Magnesium (MgO)% | B ppm | Cu * ppm | Fe* ppm | Mo ppm | Mn* ppm | Zn* ppm | pH | EC (1% g/μl) mS/cm | Bag kg | Palette kg | Greenhouse | Fertigation | Foliar fertilization | Hydroponics |
| 19-19-19(S)+TE | 3 | 0 | 16 | 19 | 19 | - | 163 | 33 | 600 | 16 | 163 | 33 | 2.5-3 | 8.5 | 25 | 1225 | ✓ | ✓ | ✓ | ✓ |
| 15-8-25(S)+3,5MgO+TE | 0,6 | 0 | 14,4 | 8 | 25 | 3,5 | 163 | 33 | 600 | 16 | 163 | 33 | 2.5-3 | 8.5 | 25 | 1225 | ✓ | ✓ | ✓ | ✓ |
| 15-30-15(S)+TE | 6,8 | 0 | 8,2 | 30 | 15 | - | 163 | 33 | 600 | 16 | 163 | 33 | 2.5-3 | 8.5 | 25 | 1225 | ✓ | ✓ | ✓ | ✓ |
| 10-10-30(S)+TE | 4,3 | 0 | 5,7 | 10 | 30 | - | 163 | 33 | 600 | 16 | 163 | 33 | 2.5-3 | 8.5 | 25 | 1225 | ✓ | ✓ | ✓ | ✓ |
| 7-10-40(S)+TE | 0 | 0 | 7 | 10 | 40 | - | 163 | 33 | 600 | 16 | 163 | 33 | 2.5-3 | 8.5 | 25 | 1225 | ✓ | ✓ | ✓ | ✓ |
| 20-5-10+(S)+2MgO+TE | 8,7 | 0 | 11,3 | 5 | 10 | 2 | 163 | 33 | 600 | 16 | 163 | 33 | 2.5-3 | 8.5 | 25 | 1225 | ✓ | ✓ | ✓ | ✓ |

- 100% water-soluble fertilizers of high purity and low conductivity.
- They do not contain chlorine, sodium, heavy metals.
- Wide variety of formulas for targeted nutrition. There is the option of choosing types enhanced with magnesium.
- All the formulas contain potassium deriving from potassium sulphate.
- Low pH which facilitates the absorption of all available soil's nutrients by the plants.
- The only formulas, in the Greek market, including the IDHA immediately biodegradable chelated trace elements.
- Any kind of formula can be produced to order.

GENERAL DOSAGE: Foliar fertilizers: 100-400 gr/100 lt of water.

Fertigation: greenhouse and outdoor crops: 2-5 kg/acre.

The dosage depends on the crop and the nutrient status of the soil.

For more information, please contact Gavriel company and the local agronomists collaborating with the company.



Compatibility*: It is allowed to combine the products with the majority of insecticides and herbicides. We should not mix with copper, oily and calcareous or very alkaline formulas. Small-scale testing is recommended before application.



NPK Crystal fertilizers



ACTIVE PLUS 100% Water-soluble!
Enhanced with 2% amino acids!

| ACTIVE PLUS | Nitrogen-N | | | IDHA* TRACE ELEMENTS IMMEDIATELY BIODEGRADED | | | | | | | | | Application | | | | | | | | |
|------------------------|--------------|----------|---------|--|------------------|------------------|-------|----------|---------|--------|---------|---------|-------------|--------------------|-------|--------|------------|------------|-------------|----------------------|-------------|
| | Ammoniacal % | Nitric % | Ureic % | Phosphorus (P2O5)% | Potassium (K2O)% | Magnesium (MgO)% | B ppm | Cu + ppm | Fe* ppm | Mo ppm | Mn* ppm | Zn* ppm | pH | EC (1% g/μl) mS/cm | Amin% | Bag kg | Palette kg | Greenhouse | Fertigation | Foliar fertilization | Hydroponics |
| 20-20-20+TE+Amin. | 4 | 4 | 12 | 20 | 20 | - | 163 | 33 | 400 | 16 | 163 | 33 | 4.5-5.5 | 8.5 | 2 | 20 | 1120 | ✓ | ✓ | ✓ | ✓ |
| 30-10-10+TE+Amin. | 4 | 1,5 | 24,5 | 10 | 10 | - | 163 | 33 | 400 | 16 | 163 | 33 | 4.5-5.5 | 8.5 | 2 | 20 | 1120 | ✓ | ✓ | ✓ | ✓ |
| 15-30-15+TE+Amin. | 6,6 | 0 | 8,4 | 30 | 15 | - | 163 | 33 | 400 | 16 | 163 | 33 | 4.5-5.5 | 8.5 | 2 | 20 | 1120 | ✓ | ✓ | ✓ | ✓ |
| 10-52-10+TE+Amin. | 8,7 | 1,3 | 0 | 52 | 10 | - | 163 | 33 | 400 | 16 | 163 | 33 | 4.5-5.5 | 8.5 | 2 | 20 | 1120 | ✓ | ✓ | ✓ | ✓ |
| 15-10-30+2MgO+TE+Amin. | 1,1 | 9,4 | 4,5 | 10 | 30 | 2 | 163 | 33 | 400 | 16 | 163 | 33 | 4.5-5.5 | 8.5 | 2 | 20 | 1120 | ✓ | ✓ | ✓ | ✓ |
| 12-9-34+2MgO+TE+Amin. | 2 | 8 | 2 | 9 | 34 | 2 | 163 | 33 | 400 | 16 | 163 | 33 | 4.5-5.5 | 8.5 | 2 | 20 | 1120 | ✓ | ✓ | ✓ | ✓ |

- They contain 2% amino acids of animal origin. Ideal for application after stress conditions.
- 100 % water-soluble fertilizers of high purity and low conductivity.
- They do not contain Chlorine, Sodium, heavy metals.
- Wide variety of formulas for targeted nutrition. Option for selecting types enhanced with magnesium.
- All types are potassium chloride free.
- The only ones in the Greek market with chelated IDHA immediately biodegradable trace elements.

GENERAL DOSAGE: Foliar fertilizers: 100-400 gr/100 lt of water.

Fertigation: greenhouse and outdoor crops: 2-5 kg/ acre.

The dosage depends on the crop and the nutrient status of the soil. For more information, please contact Gavriel company and the local agronomists collaborating with the company.

Compatibility*: It is allowed to combine the products with the majority of insecticides and herbicides. We should not mix with copper, oily and calcareous or very alkaline formulas. Small-scale testing is recommended before application.



NPK Crystal fertilizers



COMPLET SOLUBLE 100% Water-soluble!
With high concentration of trace elements!
For immediate results even after stress conditions.

| COMPLET SOLUBLE | Nitrogen-N | | | IDHA* TRACE ELEMENTS IMMEDIATELY BIODEGRADED | | | | | | | | | Application | | | | | | | |
|------------------|--------------|----------|---------|--|-------------------|------------------|-------|----------|---------|--------|---------|---------|-------------|------------------------|--------|------------|------------|-------------|----------------------|-------------|
| | Ammoniacal % | Nitric % | Ureic % | Phosphorus (P2O5)% | Potassium (K2O) % | Magnesium (MgO)% | B ppm | Cu * ppm | Fe* ppm | Mo ppm | Mn* ppm | Zn* ppm | pH | EC (1% g/100 ml) mS/cm | Bag kg | Palette kg | Greenhouse | Fertigation | Foliar fertilization | Hydroponics |
| 21-21-21+TE | 1,6 | 3,6 | 15,8 | 21 | 21 | - | 425 | 85 | 1000 | 42 | 425 | 90 | 4-4.5 | 8.5 | 25 | 1225 | ✓ | ✓ | ✓ | ✓ |
| 06-55-17+TE | 6 | - | - | 55 | 17 | - | 425 | 85 | 1000 | 42 | 425 | 90 | 4-4.5 | 8.5 | 25 | 1225 | ✓ | ✓ | ✓ | ✓ |
| 12-36-12+2MgO+TE | - | - | - | 36 | 12 | 2 | - | - | - | - | - | - | 4-4.5 | 8.5 | 25 | 1225 | ✓ | ✓ | ✓ | ✓ |
| 16-08-32+2MgO+TE | 2,2 | 9 | 4,8 | 8 | 32 | 2 | 425 | 85 | 1000 | 42 | 425 | 90 | 4-4.5 | 8.5 | 25 | 1225 | ✓ | ✓ | ✓ | ✓ |
| 28-14-14+TE | 2,8 | 4 | 21,2 | 14 | 14 | - | 425 | 85 | 1000 | 42 | 425 | 90 | 4-4.5 | 8.5 | 25 | 1225 | ✓ | ✓ | ✓ | ✓ |

- With raw materials of premium quality, high purity and excellent solubility. They contribute to pH reducing, soil unblocking and provide excellent nutrition and immediate results.
- They help the crop to overcome stress conditions.
- With a composition ensuring immediate and intense effect. For excellent establishment of the crop, filling and size increase of the fruit, ripening-color in the fruit, better taste and aroma.
- Enhanced with a high concentration of trace elements for immediate and long-lasting results. The ACTIVE IDHA trace elements are the only ones readily biodegradable. Thus, we avoid the accumulation of the chelating agents in the soil and therefore the degradation of the soil and the crop.
- Fertilizers free of chlorine and other harmful elements for the plants.
- The potassium derives from potassium nitrate in a ratio of 100%.
- Any type can be produced to order.



GENERAL DOSAGE: Foliar fertilizers: 100-400 gr/100 lt of water.
 Fertigation: greenhouse and outdoor crops: 2-5 kg/ acre. The dosage depends on the crop and the nutrient status of the soil. For more information, please contact Gavriel company and the local agronomists collaborating with the company.

Compatibility*: the products are combined with most of the insecticides and herbicides. They should not combine with copper, oily and calcareous or very alkaline formulations. Small-scale testing is recommended before application.



FERTIPLANT water-soluble raw materials



Targeted nutrition!

Fertiplant raw materials are 100% water-soluble. They are chlorine, sodium and heavy metals free. They are suitable for fertigation, hydroponics and foliar applications. They are, directly, absorbed by the plants and are ideal for flexible applications and immediate corrective operations.



FERTIPLANT POTASSIUM NITRATE GG 13.5-0-46.2

- It provides an ideal ratio of nitric nitrogen and potassium which act synergistically.
- It increases the crop's yields and improves its quality.

Compatibility*: It is allowed to combine with all the water-soluble fertilizers.

**Bag of 25 kg
palette of 1225 kg**



FERTIPLANT 11-0-43+ 20.2% SO₃

- Excellent combination of nitrogen, potassium and sulphur.
- It increases the crop's yield and improves its quality.

Compatibility*:
Not allowed to combine, in the same tank, with calcium including fertilizers. It is recommended to dissolve Fertiplant before adding the rest of the fertilizers.

**Bag of 25 kg
palette of 1225 kg**



FERTIPLANT SULPHUR POTASSIUM 0-0-52+45% SO₃

- Ideal for flexible potassium addition at any stage of the crop's growth.
- It is ideal for sulfur demanding crops.

Compatibility*:
Not allowed to combine in the same tank, with calcium including fertilizers. It is recommended to dissolve Fertiplant potassium sulphate before adding the rest of the fertilizers.

**Bag of 25 kg
palette of 1225 kg**



**FERTIPLANT
POTASSIUM CHLORIDE
0-0-60**

- The most concentrated potassium fertilizer.
- Suitable for fertigation and hydroponics at chlorine resistant crops.

Compatibility*: Allowed to mix with all the water-soluble fertilizers.

**Bag of 25 kg
palette of 1225 kg**



**FERTIPLANT
UREA PHOSPHATE
18-44-0**

- The only solid crystal formula which is strong acid.
- Ideal source of phosphorus combined with 18 units of urea nitrogen.
- Prevents clogging of the irrigation system.
- It is the perfect choice for alkaline soils.

Compatibility*: Allowed to mix with calcium including fertilizers.

**Bag of 25 kg
palette of 1225 kg**



**FERTIPLANT
MAP
12-61-0**

- High quality.
- The richest source of phosphorus in perfect combination with 12 units of ammoniacal nitrogen.
- Essential for roots growth after planting or transplanting.

Compatibility*: Not allowed to blend with calcium including fertilizers as for example calcium nitrate.

**Bag of 25 kg
palette of 1225 kg**





FERTIPLANT MKP 0-52-34

- The most concentrated fertilizer, with 86 nutrition units.
- Ideal blend of phosphorus with potassium for a high-quality crop.

Compatibility*:

Not allowed to blend with calcium including fertilizers, in the same tank. It is allowed to blend with fungicides against powdery mildew, Alternaria, mildew etc. Furthermore, it is compatible with the majority of the pesticides. It is recommended to have a compatibility test before blending.

**Bag of 25 kg
palette of 1225 kg**



FERTIPLANT MAGNESIUM NITRATE 11-0-0+ 15.5% MgO

- Ideal combination of 11 units of nitric nitrogen with magnesium, for the prevention and treatment of magnesium deficiencies.

Compatibility*:

Not allowed to blend in the same tank with calcium including fertilizers.

**Bag of 25 kg
palette of 1225 kg**



FERTIPLANT HEPTAHYDRATE SULPHUR MAGNESIUM 16% MgO + 32% SO₃

- Ideal choice for magnesium and sulfur enhancement, without affecting the ratio of nitrogen-phosphorus-potassium.

Compatibility*:

Not allowed to blend in the same tank with calcium fertilizers.

**Bag of 25 kg
palette of 1225 kg**





**FERTIPLANT
CALCIUM NITRATE
15.5-0-0 + 26.3% CaO**

- Rich source of calcium recommended for resistant fruits.
- Simultaneous nutrition with immediately absorbable nitrogen (14,4% nitric nitrogen and 1.1% ammoniacal nitrogen).

Compatibility*:

It is allowed to blend, in the same tank, with all the fertilizers apart from those including phosphorus, such as MAP, MKP, urea phosphate etc and sulfur such as ammonia sulphate, potassium sulphate, magnesium sulphate, in order to avoid the formation of salts.

**Bag of 25 kg
palette of 1225 kg**



**UREA LOW BIURON
46-0-0**

- 100% water-soluble urea, suitable for foliar applications and immediate supply of nitrogen.

Compatibility*: It is allowed to combine with all the water-soluble fertilizers.

**Bag of 25 kg
palette of 1225 kg**



**PHOSPHORIC ACID
Feed grade**

- Ideal for clogging of drips.
- It is used for fertilization with phosphorus.
- Ideal choice for pH correction.

Compatibility*:

It is not allowed to blend with organic fertilizers such as organic iron etc. It is not allowed to combine with calcium or magnesium containing fertilizers etc. it is recommended to carry out a compatibility test before blending.

**Bag of 25 kg
palette of 1225 kg**

ACTIVE IDHA CHELATED TRACE ELEMENTS 100% Water-soluble



The only ones immediately biodegraded by the plants!

| ACTIVE IDHA Chelated Trace elements Immediately biodegradable | | General Dosage* | | Packaging | | |
|---|---|---------------------|-------------|------------|---------|-----------|
| PRODUCT | COMPOSITION | FOLIAR APPLICATIONS | FERTIGATION | bin 1kgX12 | bin 5kg | bag 25 kg |
| "ACTIVE IDHA MIX" | (5,9 % Fe IDHA, 1,7% Mn IDHA, 0,4% Zn IDHA, 0,35% Cu IDHA, 1,65% B, 0,13% Mo) | 50-150 | 100-200 | ✓ | ✓ | ✓ |
| ACTIVE Fe 9% IDHA | Fe 9% | 50-100 | 200 | ✓ | ✓ | ✓ |
| ACTIVE Zn 10% IDHA | Zn 10% | 50-200 | 150-200 | ✓ | - | ✓ |
| ACTIVE Mn 9% IDHA | Mn 9% | 50-150 | 500-1000 | ✓ | - | ✓ |

*The precise dosage depends on the crop and the nutrition status of the soil. For more information, please contact Gavriel company and the local agronomists collaborating with the company.

- The IDHA chelated agents are immediately biodegraded, instead of accumulating in the soil and forming complexes with dangerous metals, as common types of chelating trace elements do.
- Suitable for foliar applications, fertigation and hydroponics.
- Immediately absorbable by the plants.
- They offer resistance to plants in stress conditions.
- They improve the crop's yield and the quality of fruits.

Compatibility:

It is not allowed to blend with other trace elements in sulfur form. The solutions need to be prepared right before their application. It is recommended to perform a compatibility test before application.



ACTIVE Bor



Boron in liquid form, suitable for fertigation and foliar applications!

| ACTIVE BOR | | | |
|-------------------------|--|--|---------------------|
| PRODUCT | COMPOSITION | General Dosage* | Packaging |
| ACTIVE BOR 11% - Liquid | Boronethanolamin 11% Water-soluble Boron 150 g/lit | Foliar application: 150-200 cm ³ /100 lt/application Soil application: 300-500 cm ³ /στρ. | bottle 1 lt X 12 |

*The precise dosage depends on the crop and the nutrient status of the soil.
For more information, please contact Gavriel company and the local agronomists collaborating with the company.

- Ideal choice for the plants growth. It improves the fertilization and photosynthesis.
- It gives immediate results with regards to the fruiting increase and the fruit setting.
- Ideal product for boron demanding crops such as olive, peach tree, apple tree, vine, greenhouse cultivations etc.



Fe HBED 7%

Ideal for high pH!
100% water-soluble



| Fe HBED 7% | | |
|------------|---|--|
| PRODUCT | General Dosage for fertigation * | Packaging |
| Fe HBED 7% | Citrus fruits: 15-40 gr/ adult tree Fruitful trees: 10-25 gr/ adult tree Outdoor crops & ornamental plants: 5-10 kg/ ha Wine grape: 30-100 kg/ ha Table grape: 50-120 kg/ ha Strawberries: 5-10 kg/ ha | Bag 1 kg X 10 τεμ. Bag 5 kg X 3 τεμ. Bag 25 kg. |

*The precise dosage depends on the crop and the nutrient status of the soil.
For more information, please contact Gavriel company and the local agronomists collaborating with the company.

The chelated iron Fe HBED 7% combines innovation, superiority and economy.
It is a highly concentrated product and 100% available to the plants.

- Ideal choice for the prevention and treatment of iron deficiencies.
- Innovative iron with optimum action at high pH values, up to 12.
- Stable even in sunlight.
- Highly concentrated product and 100% available to the plants.
- It gives longer lasting effectiveness. The concentration of chlorophyll in plants increases more with Fe HBED 7% than with Fe EDDHA, resulting in increased crops' yields.
- With excellent granulation and 100% watersolubility. It is also ideal for application through fertigation.
- Friendly to the environment and the plants, non-toxic for humans.



PLANT SOIL GRAMOFLOR

| GRAMOFLOR | | |
|---|--|-----------|
| PRODUCT | Composition | Packaging |
| Plant Soil GRAMOFLOR pH 5.2-6.0 Water capacity: 5 gr/ gr Conductivity: 0.4mS/cm | 70% black peat 30% blond peat Contains fertilizer 14-16-18+1MgO+TE 1.5 kgr/m3 | Bag 70 lt |

Suitable for seeding. It is enhanced with fertilizer for the rapid growth of young plants after sowing or transplanting.

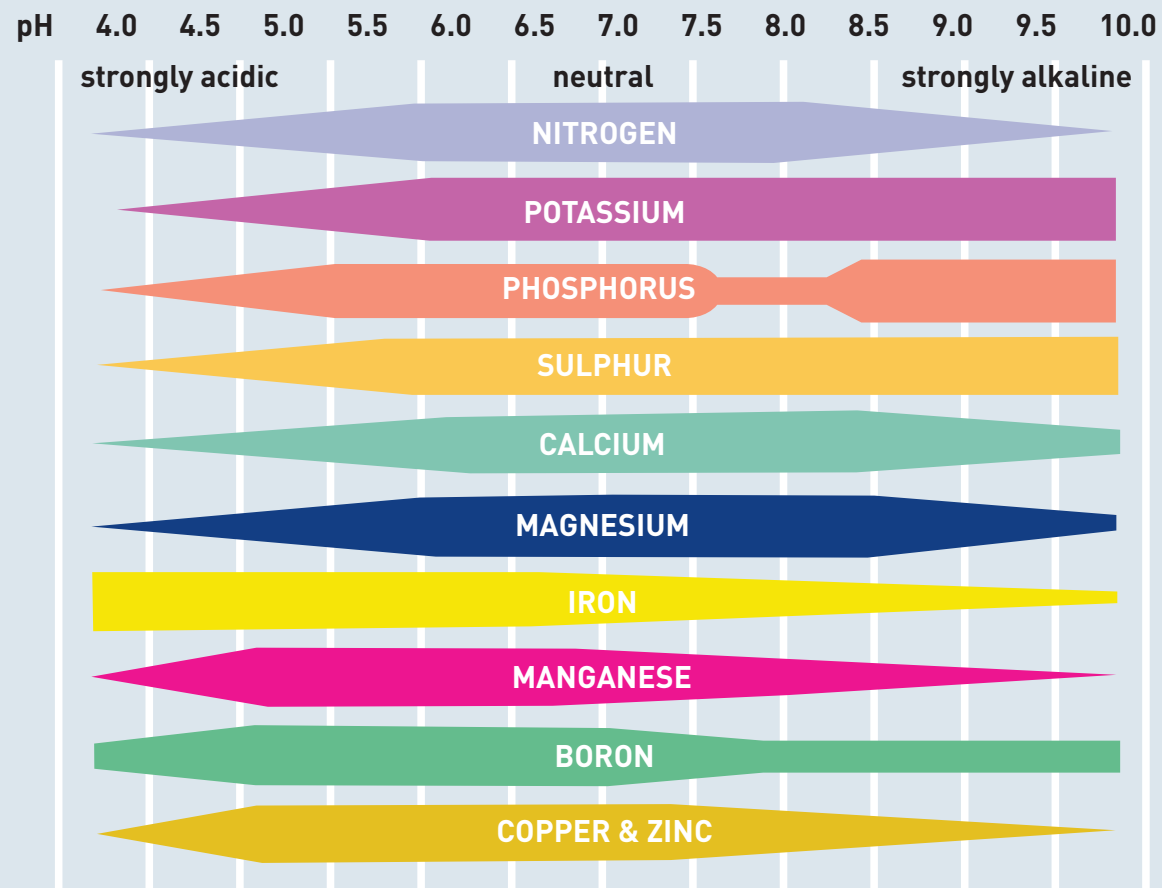


Indicative soil optimum pH values

| Crop | Optimum pH value | Crop | Optimum pH value |
|--------------|------------------|------------|------------------|
| Vine | 6,0-7,0 | Apple tree | 5,0-6,5 |
| Pear tree | 6,0-7,5 | Broccoli | 6,0-7,5 |
| Apricot tree | 6,0-7,0 | Nectarine | 6,0-7,5 |
| Olive tree | 5,5-6,5 | Potato | 4,5-6,0 |
| Corn | 5,5-7,5 | Melon | 5,5-6,5 |
| Watermelon | 5,5-6,5 | Pepper | 5,5-7,0 |
| Cherry tree | 6,0-7,5 | Orange | 5,5-7,5 |
| Cauliflower | 5,5-7,5 | Peach | 6,0-7,5 |
| Onion | 6,0-7,0 | Spinach | 6,0-7,5 |
| Cabbage | 6,0-7,5 | Beans | 6,0-7,5 |
| Lemon tree | 6,0-7,0 | Lentil | 5,5-7,0 |
| Lettuce | 6,0-7,0 | Strawberry | 5,0-7,5 |



Soil pH and nutrient availability



Fertilizers of new technology for cereals

| PRODUCTION TARGETS | GROUND APPLICATION THROUGH DISPERSION | | |
|--|---|---|---|
| | GROUND APPLICATION THROUGH DISPERSION | DOSAGE | APPLICATION TIME |
| STRONG ROOT SYSTEM & EXCELLENT INSTALLATION PROPER GROWTH ENSURING MAXIMUM PRODUCTION AND QUALITY CHARACTERISTICS | <ul style="list-style-type: none"> ■ NUTRIMORE 20-24-0 or ■ NUTRIMORE 18-28-0 or ■ NUTRIMORE 20-40-0 or ■ NUTRIMORE 30-15-0 or ■ NUTRIMORE 25-15-0 or ■ NUTRIMORE 25-15-5 or ■ NUTRIMAX 15-30-0 or ■ NUTRIMAX 20-20-0 or ■ CERES 16-20-0 or ■ CERES 22-22-0 | <p>15-25 Kgr / acre</p> <p>20-35 Kgr / acre</p> | <p>OCTOBER till NOVEMBER (WITH SOWING)</p> |
| STEM ELONGATION ENSURING MAXIMUM PRODUCTION AND QUALITY CHARACTERISTICS | <ul style="list-style-type: none"> ■ NUTRIMORE WINNER (40-0-0 + 14,5 SO₃) or ■ NUTRIMORE WINNER COMBI (Fe,Zn) or ■ NUTRIMORE N-PLUS (46-0-0) or ■ CERES 40-0-0 or ■ CERES 46-0-0 or ■ IDEALFER CAN | <p>20-25 Kgr / acre</p> <p>20-25 Kgr / acre</p> <p>15-20 Kgr / acre</p> <p>15-20 Kgr / acre</p> <p>12-15 Kgr / acre</p> <p>20-30 Kgr / acre</p> | <p>JANUARY till MARCH (SURFACE APPLICATION)</p> |

■ SURFACE APPLICATION

Fertilizers of new technology for citrus fruits

| PRODUCTION TARGETS | SURFACE FERTILIZATION | | | FOLIAR APPLICATION | | | |
|---|---|--------------|------------------------------|--|--|---|---|
| | GROUND APPLICATION THROUGH DISPERSION | DOSAGE | FERTILIZERS APPLICATION TIME | FERTIGATION & FOLIAR APPLICATION | DOSAGE | PRODUCT | FERTILIZERS APPLICATION TIME |
| PERFECT BLOSSOMING & FRUIT SETTING | <ul style="list-style-type: none"> ■ NUTRIMORE 15-15-15 or ■ NUTRIMORE 20-10-15+2MgO+Fe+Zn or ■ NUTRIMORE 21-7-17+2MgO+Fe+Zn or ■ NUTRIMORE 15-10-18+3MgO etc | 2-3kg / tree | FEBRUARY till MARCH | <ul style="list-style-type: none"> ♣ ZINC SULFUR 7 H₂O or ♣ Active IDHA Zn or ♣ Active IDHA MIX + ♣ ACTIVE PLUS 10-52-10+TE | 150-250 gr / tree or 5Kg / 1000lit water + 5Kg / 1000lit water | <ul style="list-style-type: none"> ■ CHELATED IRON HBED 9% 15-40 gr / tree or ♣ CHELATED IRON 9% IDHA 5 kgr / 1000 lt | JANUARY till FEBRUARY MARCH till APRIL |
| FRUITS SIZE INCREASE | <ul style="list-style-type: none"> ■ NUTRIMORE WINNER or ■ NUTRIMORE WINNER Fe or ■ NUTRIMORE WINNER COMBI or ■ NUTRIMORE 21-7-17+2MgO+Fe+Zn or ■ NUTRIMORE 15-10-18+3MgO or ■ COMPLET 12-12-17+2MgO+TE | 1-2kg / tree | MAY till JUNE | <ul style="list-style-type: none"> ♣ 20-20-20+TE or ♣ 15-5-30+3MgO+TE or ♣ 30-10-10+TE | 300-500 gr / tree | ♣ CHELATED IRON 9% IDHA 5 Kg / 1000lit water | APRIL till JUNE |
| EARLY GROWTH FRUITS SIZE INCREASE & QUALITY IMPROVEMENT | <ul style="list-style-type: none"> ■ NUTRIMORE WINNER or ■ NUTRIMORE WINNER COMBI or ■ NUTRIMORE WINNER Fe or ■ NUTRIMORE 10-0-40 or | 1-2kg / tree | JULY till AUGUST | <ul style="list-style-type: none"> ♣ 7-10-40+TE or ♣ 15-5-30+3MgO+TE or ♣ 12-9-34+2MgO+TE or ♣ FERTIPLANT potassium nitrate or ♣ FERTIPLANT potassium sulfate | 300-500 gr / tree 5-8 kgr / acre 5-8 kgr / acre | | JULY till AUGUST |

- SURFACE FERTILIZATION
- ♣ FOLIAR APPLICATION
- ♣ FERTIGATION

* The above mentioned NPK formulas are available at the ranges ATLAS, VERASOL, CRONOS, FERTITOP, FERTIPLANT, ACTIVE PLUS and the new range of COMPLET SOLUBLE.

IDHA

* All the NPK water-soluble formulas are enhanced with the concentrated IDHA trace elements, the only ones in the Greek Market which are immediately degradable

Fertilizers of new technology for table and oilable olives

| PRODUCTION TARGETS | SURFACE FERTILIZATION | | | FERTIGATION & FOLIAR APPLICATION | | | |
|--|--|--|------------------------------|--|--|---|-----------------------------|
| | GROUND APPLICATION THROUGH DISPERSION | DOSAGE | APPLICATION TIME | FERTILIZERS OF NEW TECHNOLOGY | DOSAGE | APPLICATION TIME | |
| ENSURING THE PRODUCTION OF THE CURRENT AND NEXT YEAR | <ul style="list-style-type: none"> ■ NUTRIMORE 20-6-14 +B or ■ NUTRIMORE 20-7-12+2MgO+B or ■ NUTRIMORE 21-7-17+2MgO+TE or ■ CERES 20-10-10+B | IRRIGATED & DRY CROPS 2-5kg / tree | DECEMBER till FEBRUARY | * The below mentioned NPK formulas are available at the ranges ATLAS, VERASOL, CRONOS, FERTITOP, FERTIPLANT, ACTIVE PLUS and the new range of COMPLET SOLUBLE. | | | |
| FRUITING INCREASE | <ul style="list-style-type: none"> ■ NUTRIMORE WINNER or ■ NUTRIMORE WINNERBOR or ■ NUTRIMORE WINNER COMBI or ■ CERES 40-0-0 ■ IDEALFER BORAS | IRRIGATED 0,5-1kg / tree ----- 1-2 kg / tree | MARCH till MAY | + | <ul style="list-style-type: none"> 🌿 20-20-20+TE* n 🌿 30-10-10+TE* and ACTIVE BOR 🌿 or ACTIVE MIX IDHA | 4-6kg / 1000lit WATER 2lit / 100lit WATER 2kg / 1000lit WATER | MARCH till MAY |
| FRUIT SIZE INCREASE | <ul style="list-style-type: none"> ■ NUTRIMORE WINNER or ■ NUTRIMORE WINNERBOR or ■ IDEALFER BORAS | IRRIGATED 0,5-1kg / tree ----- 1-2 kg / tree | MAY till JUNE | + | <ul style="list-style-type: none"> 🌿 20-20-20+TE* n 🌿 30-10-10+TE* and ACTIVE MIX IDHA | 4-6kg / 1000lit WATER 2kg / 1000lit WATER | MAY till JUNE |
| INCREASE OF FRUIT'S WEIGHT AND OLIVE OIL PRODUCTION | <ul style="list-style-type: none"> ■ NUTRIMORE 10-0-40 or ■ COMPLET 12-12-17+2MgO+TE | IRRIGATED 1-2,5kg / tree | AUGUST till SEPTEMBER | + | <ul style="list-style-type: none"> 🌿 12-9-34+TE* or 🌿 7-10-40+TE* or 🌿 10-10-30+TE* 🌿 or FERTIPLANT 11-0 43 🌿 and ACTIVE MIX IDHA | 5-10kg / 1000lit WATER 5-10kg / 1000lit WATER 0,5kg / tree 2kg / 1000lit WATER | AUGUST till SEPTEMBER |
| ENHANCEMENT & EMPOWERMENT OF THE TREE | <ul style="list-style-type: none"> ■ CERES 0-25-25 or ■ CERES 0-10-30+2MgO+B or ■ COMPLET KALI or ■ FERTIPLANT BORON | IRRIGATED & DRY CROPS 1-2kg / tree ----- 0,3-1kg / tree | NOVEMBER till DECEMBER | | <p>IDHA</p> <p>* All the NPK water-soluble formulas are enhanced with the concentrated IDHA trace elements, the only ones in the Greek Market which are immediately degradable.</p> | | |

■ SURFACE FERTILIZATION

🌿 FOLIAR APPLICATION

💧 FERTIGATION

Fertilizers of new technology for the vines

| PRODUCTION TARGETS | SURFACE FERTILIZATION | | FERTIGATION & FOLIAR FERTILIZATION | | |
|--------------------------------------|---|-----------------|--|-----------------|-----------------------------|
| | APPLICATION THROUGH SOIL DISPERSION | DOSAGE | FERTILIZERS OF NEW TECHNOLOGY | DOSAGE | FERTILIZER APPLICATION TIME |
| EXCELLENT BLOSSOMING & FRUIT SETTING | <ul style="list-style-type: none"> ■ NUTRIMORE 15-10-18+ 3MgO or ■ NUTRIMORE 15-15-15-0,13Fe+0,06Zn DDP or ■ NUTRIMORE 20-10-15+2MgO +0,09Fe+0,06Zn DDP or ■ NUTRIMAX 14-10-18+TE | 50-70 kg / acre | <ul style="list-style-type: none"> ■ Fe HBED 7% or ● ACTIVE IDHA Fe | 2-3 kg / acre | JANUARY till FEBRUARY |
| SPROUT GROWTH | <ul style="list-style-type: none"> ■ NUTRIMORE WINNER or ■ NUTRIMORE WINNER COMBI or ■ NUTRIMORE WINNER FE or | 15-25kg / acre | <ul style="list-style-type: none"> ● Calcium Nitrate | 10-15kg / acre | MARCH till APRIL |
| | <ul style="list-style-type: none"> ■ NUTRIMORE N-PLUS | 12-18kg / acre | <ul style="list-style-type: none"> ● Zinc Sulphate 22.5% or ● ACTIVE IDHA Zn | 2-3 kg / acre | |
| RACK GRAPES GROWTH | | | <ul style="list-style-type: none"> ● VERASOL 12-9-34+TE or ● VERASOL 12-5-30+TE or ● COMPLET Soluble 16-8-32+TE | 10-15 kg / acre | MAY till JULY |
| MATURATION | | | <ul style="list-style-type: none"> ● Potassium Sulphate or Potassium Nitrate + | 8-10 kg / acre | JUNE till AUGUST |
| | | | <ul style="list-style-type: none"> ● ACTIVE IDHA Mix | 2-3 kg / acre | |

* The above mentioned NPK formulas are available at the ranges ATLAS, VERASOL, CRONOS, FERTITOP, FERTIPLANT, ACTIVE PLUS and the new range of COMPLET SOLUBLE. All the NPK water-soluble formulas are enhanced with the concentrated IDHA trace elements, the only ones in the Greek Market which are immediately degradable

■ SURFACE FERTILIZATION

● FOLIAR FERTILIZATION

● FERTIGATION

Fertilizers of new technology for the corn, the fruit and the silage

| PRODUCTION TARGETS | SURFACE FERTILIZATION | | | FERTIGATION & FOLIAR FERTILIZATION | | | |
|---|---|--|-----------------------------|------------------------------------|---|---|---------------|
| | APPLICATION THROUGH SOIL DISPERSION | DOSAGE | FERTILIZER APPLICATION TIME | FERTILIZERS OF NEW TECHNOLOGY | DOSAGE | FERTILIZER APPLICATION TIME | |
| PROPER INSTALLATION OF THE CROP | <ul style="list-style-type: none"> ■ NUTRIMORE 30-6-6 +Zn or ■ NUTRIMORE 27-7-7+Zn or ■ NUTRIMORE 24-8-8+Zn or ■ NUTRIMORE 21-7-17+2MgO+Fe+Zn or ■ NUTRIMAX 28-8-8+TE | 40-60 Kgr / acre | MARCH till APRIL | | | | |
| PLANTS HEIGHT AND LEAF AREA INCREASE | <ul style="list-style-type: none"> ◆ NUTRIMORE WINNER or ◆ NUTRIMORE WINNER COMBI or ◆ NUTRIMORE N-PLUS or ◆ CERES 40-0-0 or ◆ CERES 46-0-0 or ◆ IDEALFER CAN | 30-40 Kgr / acre 30-40 Kgr / acre 30-40 Kgr / acre 20-25 Kgr / acre 20-25 Kgr / acre 40-50 Kgr / acre | MAY till JULY | + | <ul style="list-style-type: none"> ◆ ACTIVE Zn 10% IDHA or ◆ ACTIVE Mn 9% | 150-200 gr / acre or 100-150 gr / acre | MAY till JUNE |
| BETTER FERTILITY OF POLLEN, FILLING OF CORN THROUGHOUT ITS LENGTH | COVERED BY THE BASIC AND SURFACE FERTILIZATION | | | | | | |
| MAXIMUM YIELD AND QUALITY | COVERED BY THE BASIC AND SURFACE FERTILIZATION | | | | | | |

Caution: The Nutrimore products are fertilizers with zero nitrogen losses. Indicatively, a common fertilizer such as 32-8-8 is equal to NUTRIMORE 24-8-8, at basic fertilization. At surface fertilization, by applying NUTRIMORE, you reduce the quantity of the requisite fertilizer by 30% in comparison with the common urea or the urosulfate (chemical or blending).

■ SURFACE FERTILIZATION

◆ FERTIGATION

Fertilizers of new technology for cotton

| PRODUCTION TARGETS | SURFACE FERTILIZATION | | | FERTIGATION & FOLIAR FERTILIZATION | | | |
|--------------------------------------|--|--|---|---|---|---------------------------------|----------------------------------|
| | APPLICATION THROUGH SOIL DISPERSION | DOSAGE | FERTILIZER APPLICATION TIME | FERTILIZERS OF NEW TECHNOLOGY | DOSAGE | FERTILIZER APPLICATION TIME | |
| PROPER INSTALLATION OF THE CROP | <ul style="list-style-type: none"> ■ NUTRIMORE 18-28-0 or ■ NUTRIMORE 20-24-0 or ■ NUTRIMORE 20-40-0 or ■ NUTRIMAX 15-30-0+Zn+Mn or ■ NUTRIMORE 15-15-15 or ■ NUTRIMORE 20-7-12+2MgO+B or ■ NUTRIMAX 22-12-12+Zn+Mn | 20-30 Kgr / acre 20-30 Kgr / acre 20-30 Kgr / acre 20-30 Kgr / acre 30-40 Kgr / acre 30-40 Kgr / acre 30-40 Kgr / acre | MARCH till APRIL | + | <ul style="list-style-type: none"> ◆ FERTIPLANT Urea Phosphate | 3 Kgr / acre | 2-3 leaves |
| PLANT GROWTH AND EXCELLENT FLOWERING | <ul style="list-style-type: none"> ◆ NUTRIMORE WINNER or ◆ NUTRIMORE WINNER COMBI or ◆ NUTRIMORE N-PLUS or ◆ CERES 40-0-0 or ◆ CERES 46-0-0 or ◆ IDEALFER Ammonium Nitrate | 20-25 Kgr / acre 20-25 Kgr / acre 20-25 Kgr / acre 25-30 Kgr / acre 25-30 Kgr / acre 40-50 Kgr / acre | MAY till JULY Before the appearance of combs | + | <ul style="list-style-type: none"> ◆ * 20-20-20+TE ◆ + ACTIVE IDHA Zn | 0,5 Kgr / acre 200 gr / acre | Plant size between 15-20cm |
| INCREASED WEIGHT OF COTTON | | | | <ul style="list-style-type: none"> ◆ FERTIPLANT 11-0-43 or ◆ FERTIPLANT Potassium Sulphate or ◆ FERTIPLANT Potassium Nitrate | 5-7 Kgr / acre | Beginning of maturity | |

- SURFACE FERTILIZATION
- ◆ FOLIAR FERTILIZATION
- ◆ FERTIGATION

* The above mentioned NPK formulas are available at the ranges ATLAS, VERASOL, CRONOS, FERTITOP, FERTIPLANT, ACTIVE PLUS and the new range of COMPLETE SOLUBLE.

IDHA

* All the NPK water-soluble formulas are enhanced with the concentrated IDHA trace elements, the only ones in the Greek Market which are immediately degradable



www.gavriel.gr